

Glendale 4070-EX
Multi-slide door
& window



NU VISTA
WINDOWS & DOORS





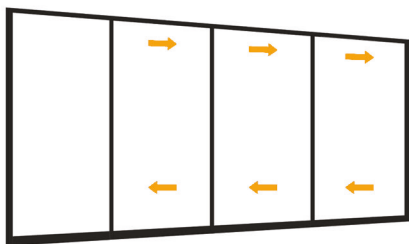
Making your
projects
COME TRUE

Glendale 4070-EX
**Multi-slide door
& window**





Nuvista's Glendale 4070-EX, our most popular multi-slide doors and windows are known for their versatility and unlimited configurations and widths. The strength of our aluminum walls allows us to build massive sized glass panels while maintaining 2-1/8" narrow lines. What makes our multi-slider standout is the way that either the massive door can completely disappear into a pocket, or each panel can slide and stack to the side in any direction.



Additionally, optional screen panels are available for all sliding glass panels.

All of this is made possible by the individual aluminum tracks, header and jambs along with our Husky Heavy Duty 3 "Rollers which have sealed precision bearings with a load capacity of 1000 pounds per panel.

The smooth and quiet panels slide so easily that even a child can move hundreds of pounds using only one hand.

Our design allows everything from handle hardware to the Stainless Steel track to be surprisingly unnoticed. Our clean, modern panels can be made to slide into pockets or be stacked at one or both sides of an opening to meet your specifications.

Multi Slide Doors can be built to your dreams, your imagination is the limit!

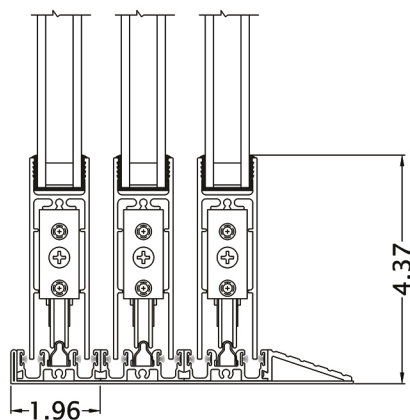
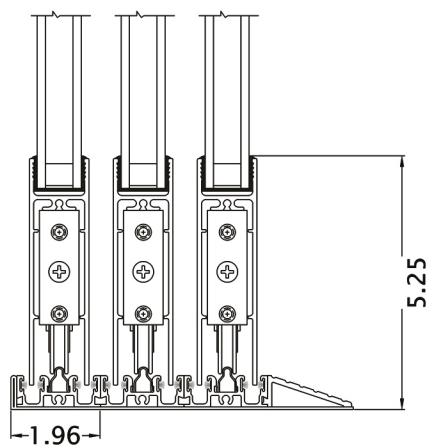
A modern outdoor patio area featuring large glass windows and doors. The patio is furnished with white lounge chairs and cushions. A white patio umbrella is visible on the left. The ceiling is white with recessed lighting. The background shows a view of a hillside and a pool area.

Hardware & CAD **detail** samples



Flush Sill

The Aluminum Flush Sill .75 is the most ideal option if you desire to create a smooth transition between the interior flooring and the outside while providing protection from high winds and water pressure. Additional weather protection can be obtained with our Stainless Steel Sill Pan if desired.





Multi-Point Lock

The Stainless Steel construction of the Multipoint stainless steel hook lock is recessed into the jamb and latches a various contact points. It complies with highest standard of quality in strength, security and protection.



Flush Handle

The Flush Handle, standard hardware on all Glendale 4070-EX Multi-Slide Door configurations, is designed to almost disappear when the door is open, either the panels bypass each other or slide into a pocket. Our standard is a Brushed Nickel or a Black Powder Coating finish, however there are additional options available upon request.



90°degree Condition

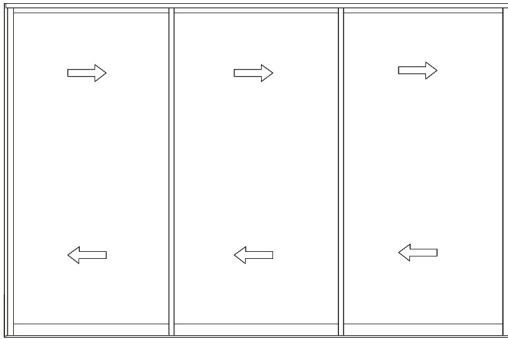
Our Multi-Slide Doors can be built with a 90-degree corner configuration allowing an entire corner of a house to open, for a fully integrated indoor-outdoor flow.



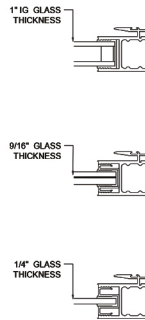
Glendale 4070-EX Series

Non-thermally Broken / Multislider door

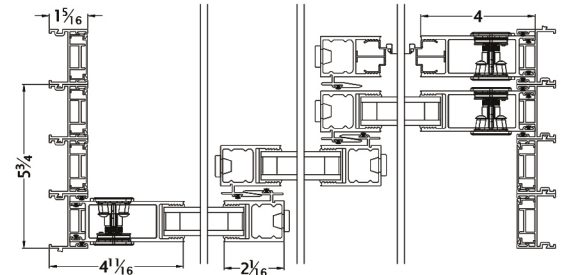
XO, XXO, OXXO, PXX, PXX-90-XX



GLAZING
DETAILS



xxx Door w/ Screen

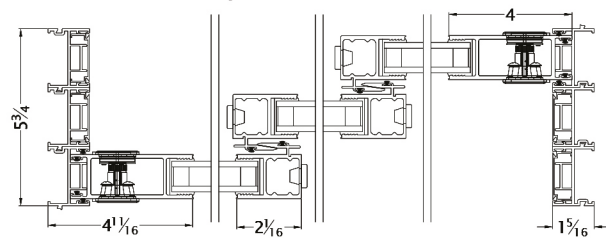


EXTERIOR



xxx Door

Top view

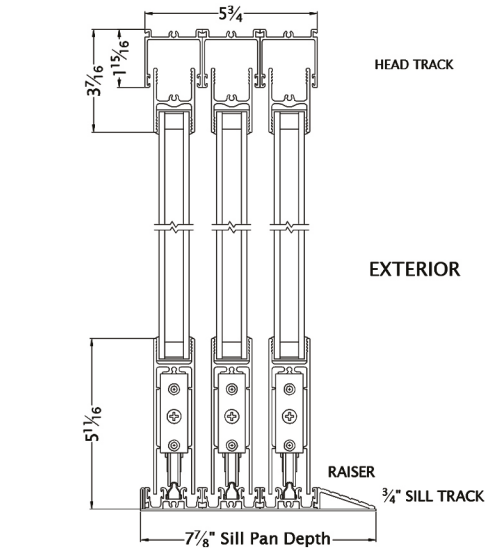
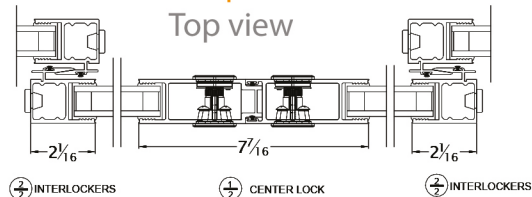


EXTERIOR



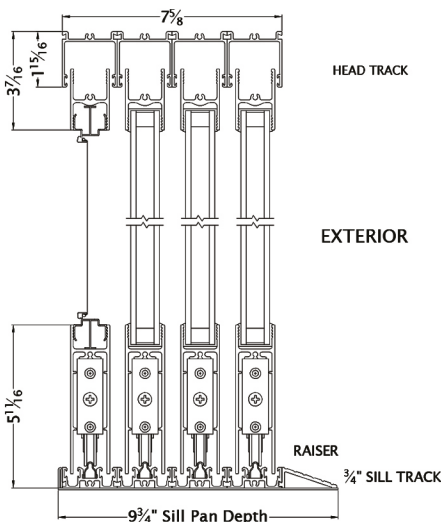
OXXO Application

Top view

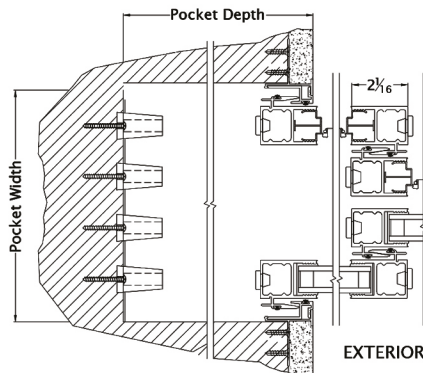


xxx Door

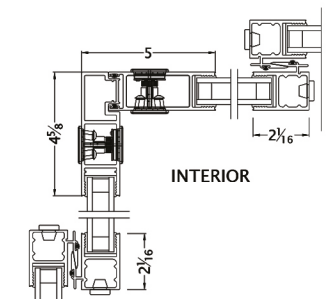
Side view



Optional Heavy
Duty Screen



Pocket Application
w/Screen



Corner Application

Please visit our website www.nuvistawindows.net for the following:

*Product Specification (PDF)

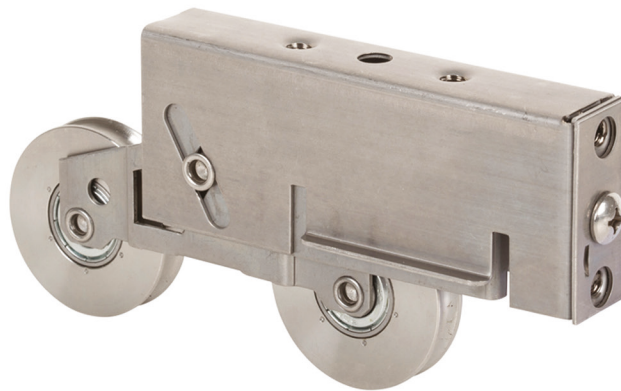
*Elevation & Plan Details (PDF & DWG)

*Product Warranty information (PDF)

*Care and Maintenance (PDF)

1-13/16" Roller

The 1-13/16" Roller for our smaller Multi-Slider doors is a Stainless Steel Tandem Roller with sealed precision bearings that slide smoothly.



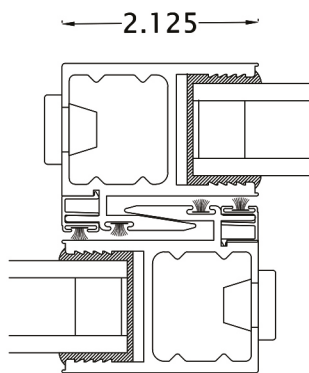
3" Huskey Rollers

The 3" Roller, for our oversized Multi-Slider doors are a Stainless Steel Tandem Roller with Sealed Precision Bearings. While recommended for door heights over 10 feet, it is available for all sized doors. These rollers can handle 1000 pounds per panel and have been a customer favorite due to their easy, smooth and quiet sliding.

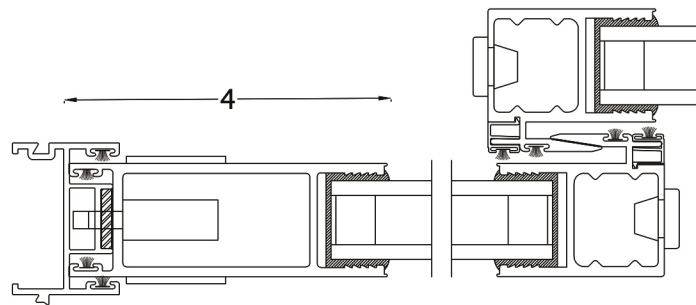


Lock Style & interlock

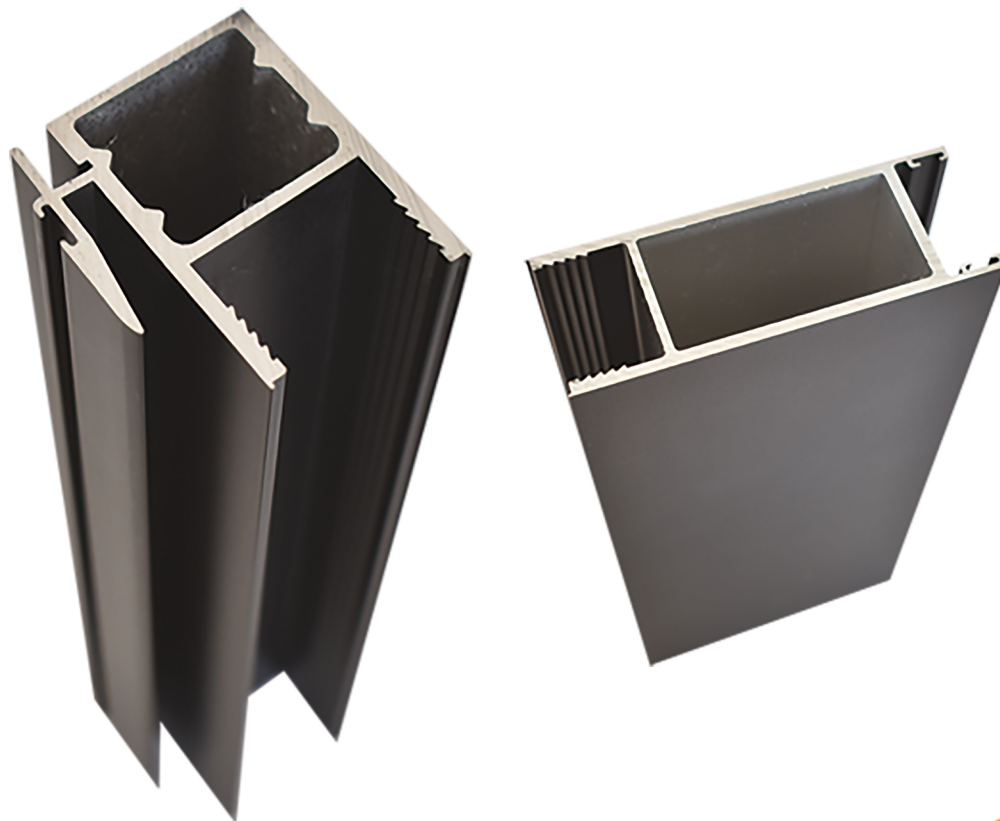
The interlock has a 2-1/8" sideline, it is narrow, modern and strong. The standard 1-13/16" and 3" Husky rollers allow Nuvista to be used on door panels up to 144" (12') tall. For the other side, our lock Stile has a 4" sideline, being more safe when the position of the door is closed with a Stainless Steel Multi-Point lock.



Interlocking condition



Fixed position



Energy Values

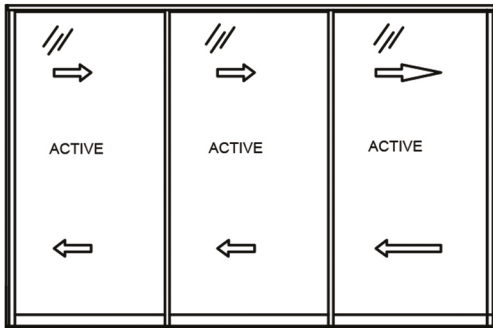
SERIES GLENDALE 4070-EX SLIDING

DOOR	U-FACTOR		SHGC (No Dividers)	
	AIR	ARGON	AIR	ARGON
Guardian SN68/ Clear 6mm	0.57	0.54	0.37	0.37
Solarban 70/ clear 6mm	0.56	0.53	0.23	0.22
Solarban 60/ Clear 6mm	0.57	0.53	0.31	0.31
Solarban 70/ Clear 5mm	0.57	0.53	0.23	0.22
Solarban 60/ Clear 5mm	0.57	0.54	0.32	0.31
Solarban 70/ Clear 3mm	0.57	0.54	0.23	0.22
Solarban 60/ Clear 3mm	0.57	0.54	0.32	0.32
Guardian SNX62/27/ Clear	0.56	0.53	0.22	0.22
Cardinal 180/ i89 6mm	0.52	0.49	0.45	0.46
Cardinal 272/ i89 6mm	0.51	0.49	0.31	0.31
Cardinal 270/ i89 6mm	0.51	0.49	0.28	0.28
Cardinal 366/ i89 6mm	0.51	0.49	0.22	0.22
Cardinal 340/ i89 6mm	0.51	0.49	0.15	0.15
Cardinal 180/ Clear 6mm	0.57	0.54	0.47	0.47
Cardinal 272/ Clear 6mm	0.57	0.54	0.32	0.32
Cardinal 270/ Clear 6mm	0.57	0.53	0.29	0.29
Cardinal 366/ Clear 6mm	0.56	0.53	0.23	0.22
Cardinal 340/ Clear 6mm	0.56	0.53	0.16	0.15

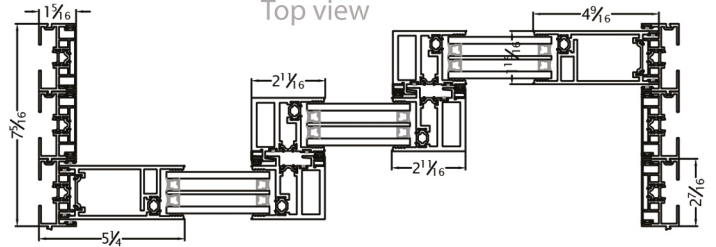
Glendale 4070T-EX Series

Thermally Broken / Multislider door

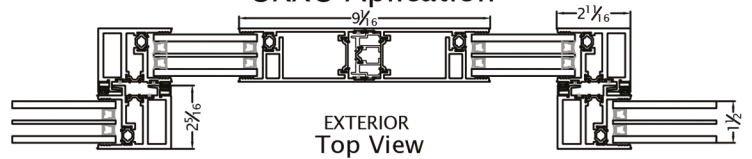
XO, XXO, OXXO, PXX, PXX-90-XX



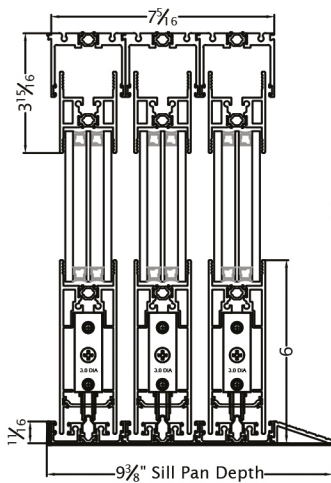
XXX Door
Top view



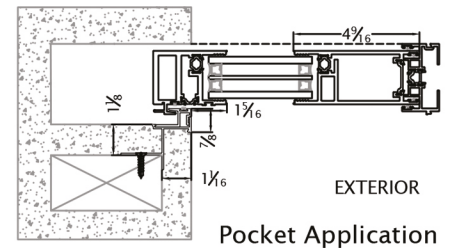
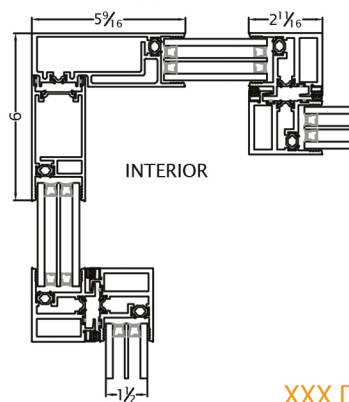
OXXO Application



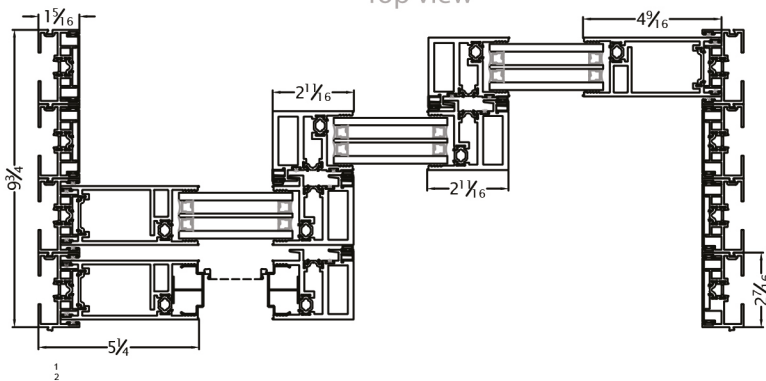
XXX Door
Side view



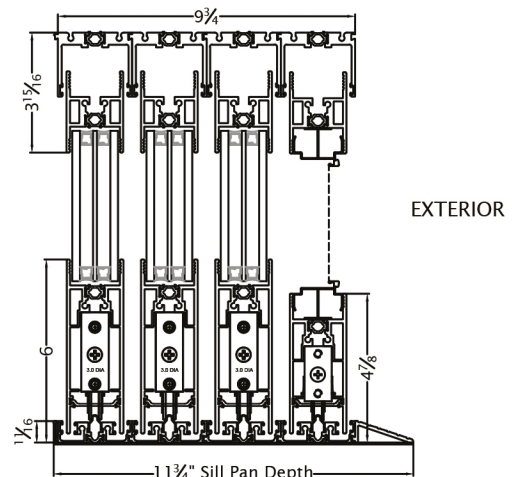
Corner Application



XXX Door
Top view



XXX Door w/screen
Side View



Please visit our website www.nuvistawindows.net for the following:

*Product Specification (PDF)

*Elevation & Plan Details (PDF & DWG)

*Product Warranty information (PDF)

*Care and Maintenance (PDF)



Making your
projects
come true



NU VISTA
WINDOWS & DOORS
nuvistawindows.net